

Ford Recreation Ground

User Survey 2022

Summary of Findings

Low Response Rate

- Only 31 responses were received to the survey which may lead to the findings being not representative of the entire community with certain groups opinions not being captured – particularly older teenagers and young adults.

Reasonable Usage

- Over two-thirds of respondents use the recreation ground at least weekly.

Negative Perception

- The overall perception of the recreation ground is generally negative due to outdated boring equipment, poor upkeep, vandalism and anti-social behaviour.

Update and Expand Play Equipment

- In the main respondents wanted the recreation ground updated and expanded with a wider range of more innovative and exciting equipment for all ages.
- The current MUGA and full size football pitch were seen as positives.

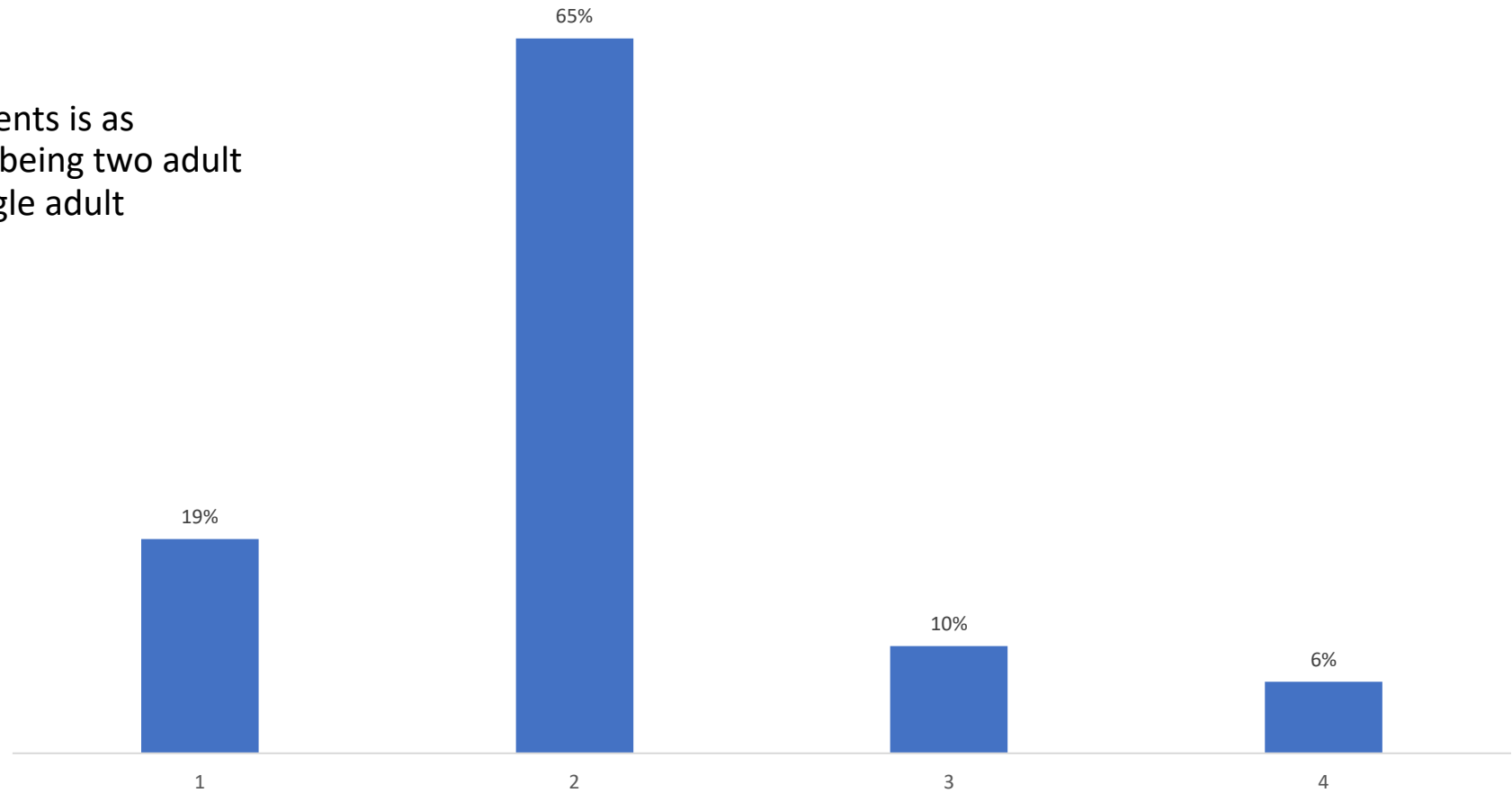
Include Adult Gym

- The additional of adult gym equipment split opinion - but overall there did seem to be a desire from a significant section of the respondents for these additional facilities.

Q1. How many adults are in your household?

The distribution of respondents is as expected with the majority being two adult households followed by single adult households.

Q1. How many adults are in your household?



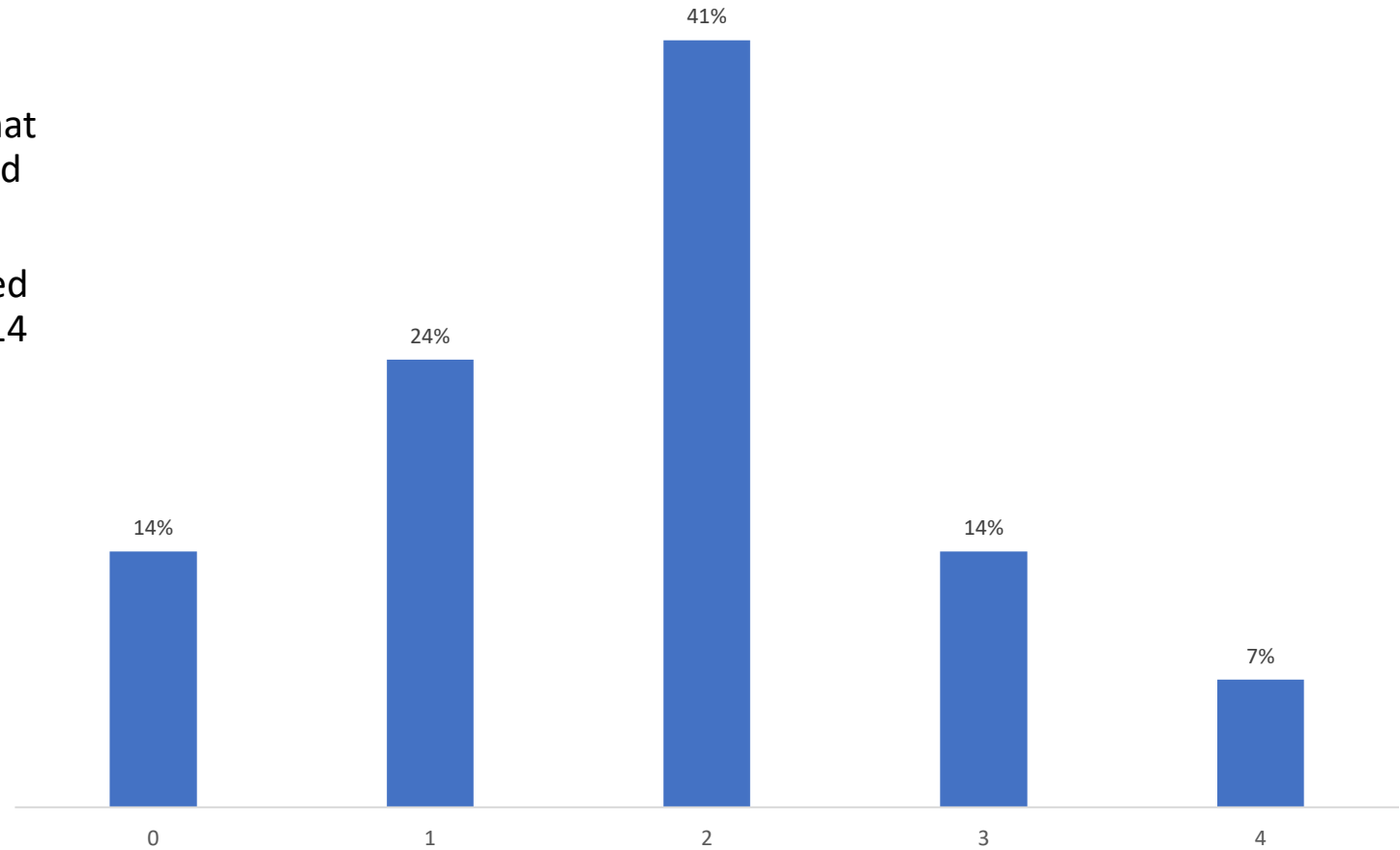
Base = 31

Q2. How many children (under 18) are in your household?

There was one response that indicated that they cared for two grandchildren and used the recreation ground with them.

There was another response that indicated that they were a childminder with up to 14 children and they used the area. This response is not included in the chart opposite.

How many children (under 18) are in your household?



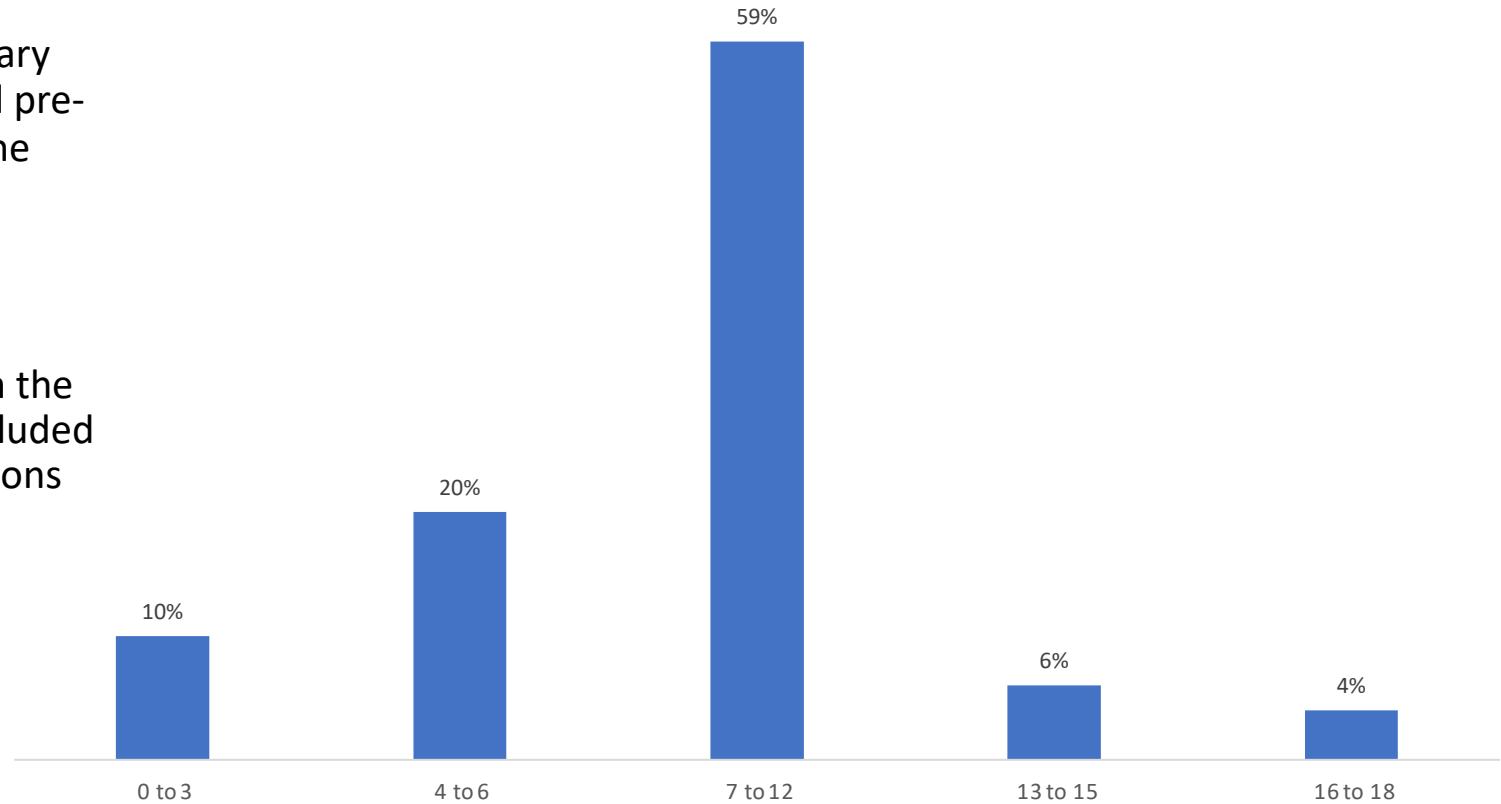
Base = 31

Q3. What are the ages of the children in your household?

The most significant age group is primary school children (7-12) with infants and pre-schoolers making up the majority of the remaining responses.

However, this may indicate that older children and teens, who are present in the community, were not engaged or included in the survey and therefore their opinions were not captured.

What are the ages of the children in your household?

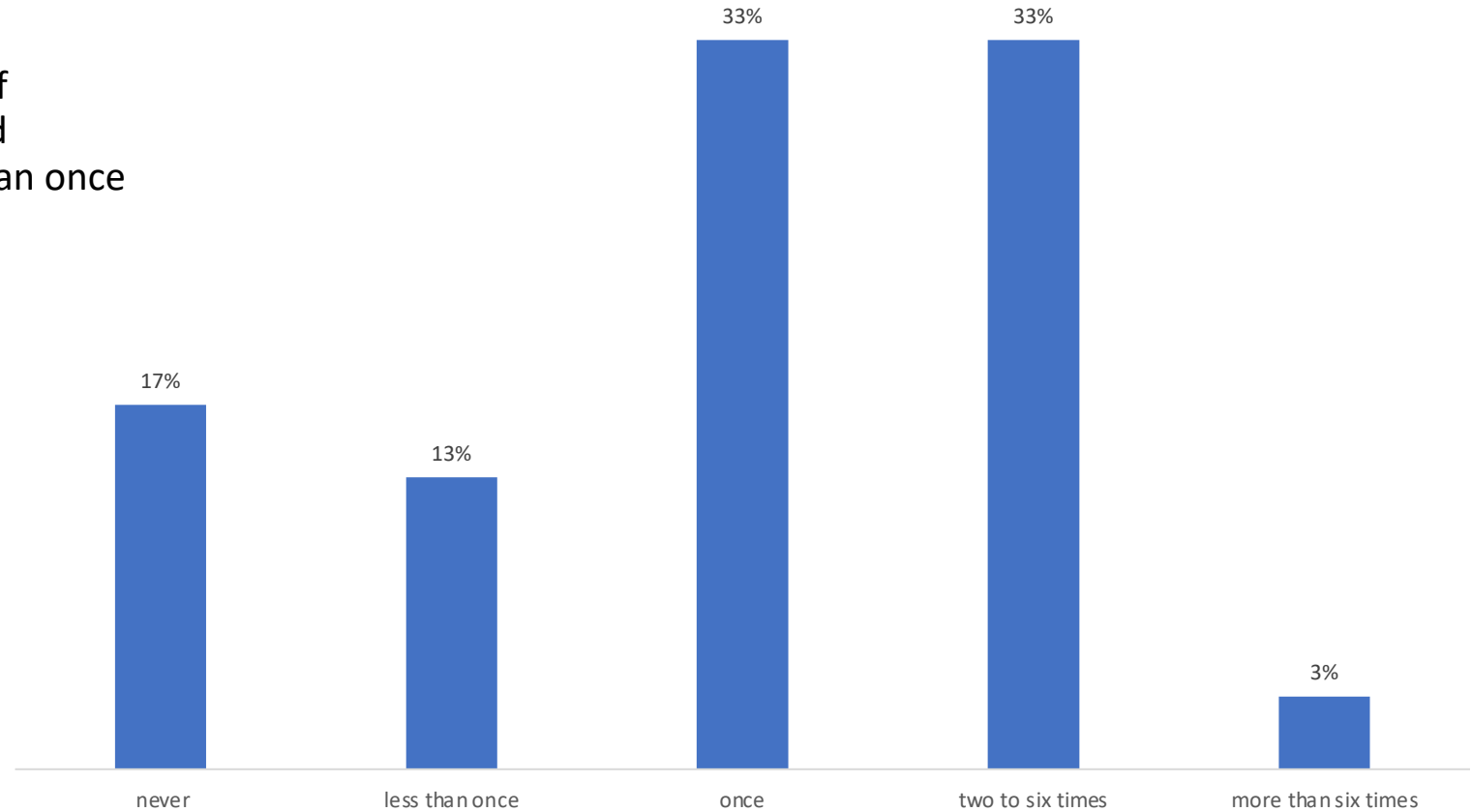


Base = 28

Q4. In a typical week, how many times do you use the Ford Recreation Ground Play Area?

Usage is generally light with a third of respondents visiting once a week and another third using the area more than once a week.

Q4. In a typical week, how many times do you use the Ford Recreation Ground Play Area?



Base = 30

Q5. What is your overall view of the Ford Recreation Ground Play Area?

Half of respondents felt that area is dated and there were a number of responses indicating that equipment did not adequately cater for all age groups and the area was generally boring

There were a number of comments focusing on 'anti-social behaviour' and mentions of vandalism and offensive graffiti.

There were positive mentions of the full-size football goals with nets and the fencing around the MUGA.

Occasionally we will go after school with other children from the school in warmer weather (we are within the parish area but slightly out the village) , but mostly we would not choose this area for our children to play as I always have to check the children's area for broken glass after an incident when one of my children picked some up from the top of the slide

Not used by young ones as youth hang around, grass not cut, dog mess, benches needed for adults, no paths

It's a shame that it gets vandalised often I don't like taking my children there with some of the language that is written on some of the equipment. I would use it more often if it was more age appropriate too.

It's fine. Dated but still good fun. Children don't want to go there alone however, due to the antisocial behaviour seen by a small number of other children.

Needs regular maintenance .. the basketball pitch is not cared for .. covered in tree debris .. so whatever facilities you decide on there needs to be maintenance plans included. The football nets need attention .. new clips or replacing .

Q6. Which pieces of existing play equipment would you like to keep?

A third of respondents mentioned the swings with the slide also getting a number of mentions.

Other positive mentions included the MUGA, the full size football pitch, climbing ropes, equipment, monkey bars, rockers and seesaw.

However, there were a significant number of comments (5) that indicated everything should be replaced and/or updated.

Swings, both for toddlers and the big swings. All the equipment has been enjoyed by my children when they were younger. A larger slide and climbing frame for older primary age children would be a great addition.

Everything needs replacing. The swings and slide are always popular but need renewing.

Could we keep what is there but add to it to make it bigger and better?

Climbing frame/slide Tarmac football area, the field often is too wet to play football on.

Normal children's play equipment - slide, swing, seesaw.

Swings, slide. Muga and football pitch

The little football/basketball area, slide and swings

Q7. Which pieces of play equipment would you like to replace?

The most common theme was to replace all of the equipment (8). However, there were two comments to replace none and two that wanted more adding.

Five comments referenced that updating was required, with the rockers being mentioned most often. However, there mentions for slide, swings and seesaw also.

Upkeep and maintenance of the MUGA was a recurring theme – with painting, repair and resurfacing mentioned.

The playpark equipment is very dated except the climbing frame/slide. The shelter just encourages anti social behaviour sadly.

Definitely remove the bus shelter type seating things as they seem to be a place for youth to gather,

Don't replace, make bigger and better!

Basketball court could be resurfaced so it's safer

The rocking horse need replacement

All of it!

The bus stop style seat- appeals to teenagers to smoke and drink in!

Q8. What types of new children's equipment would you like to be installed?

The most mentions were for a zip-line, followed by spinning bowls, balance equipment, cradle swings and large fortress/pirate ship. Bike track and BMX/skate park was also very popular.

Mentions were made to ensure zoning of age-appropriate equipment with the inclusion of sensory equipment.

Improvements to the full-size football pitch were mentioned – such as marking out, grass cutting and new nets.

A pirate ship or fortress climbing frame (Pontesbury or Hanwood parks have these) and slide, a decent seesaw, new swings (maybe with one that can be used for children with additional needs) Dish roundabout or table roundabout (Pontesbury) Zip wire (for the older children)

Equipment similar to the quarry. A better marked out / separate football pitch to encourage use and so it doesn't get covered in dog poo.

Hanwood is a good example as they have 2 separate park areas, one for younger children and another for older children with a zip wire and a type of obstacle course that goes around,

Roundabout Climbing wall Zip line Wobbly bridge BMX bike track
Skateboard track Nest swing

Colorful, more modern equipment that compliments learning I.e colors, the alphabet and numbers for little ones.

Colorful, more modern equipment that compliments learning I.e colors, the alphabet and numbers for little ones.

Q9. What types of new adult equipment would you like to be installed?

There were slightly less comments for this question perhaps indicating a slightly lower need or engagement. There were a few comments indicating that they didn't believe it would be used.

However, 10 comments did reference outdoor adult gym equipment. This could indicate that there is a need for this but it perhaps should be distanced from the children's area

There were also mentions for a trim trail / running track along the perimeter as well as requests for picnic benches, more seating and more bins.

Exercise equipment such as pull up bars, stepping machine, bike

Fitness equipment. Circuit training type things.

Trim trail around the outside of the field

None, it wouldn't be used.

A couple more seating benches and dust bins.

None it's a children's playground not an adults' playground!

Ones that can't be trashed by the older youths!